



PREMIER MARINE  
ENTERTAINMENT



M A R I N E







M A R I N E

When you choose products from  
JENSEN® Marine, you choose tradition,  
experience and style.

Enjoy life on the water with  
electronics that are Designed  
to Move You.





## JMS3 - AM/FM/160 Watts/USB/Bluetooth®

- 160 watts (40W x 4)
- Bluetooth streaming audio (A2DP/AVRCP)
- Press and hold Bluetooth button for Quick Pairing in any mode
- Waterproof (IPX6)
- Weatherband/S.A.M.E.
- Rear USB input for MP3 enabled devices
- Rear AUX input (RCA)
- Line-out audio (RCA)
- Daylight-readable segmented LCD display and LED backlit buttons
- Electronic audio settings (Bass/Treble/Balance/Fader)
- Compact, self-contained design
- Simple user interface
- Conformal coated circuit boards
- UV resistant finishes/materials (ASTM D4329)
- Corrosion resistant materials (ASTM B117)
- FCC/CE certified
- AM/FM tuner



**NEW**

**STEREOS**



#### **JMS4 - AM/FM/160 Watts/USB/iPod®/iPhone® Ready/Bluetooth**

- 160 watts (40W x 4)
- Bluetooth streaming audio (A2DP/AVRCP)
- Waterproof (IPX6)
- Weatherband
- AM/FM tuner
- Rear USB input for MP3 enabled devices
- Rear AUX input (RCA)
- Rear Auxiliary Audio Output
- USB MP3/WMA Player
- Conformal coated circuit boards
- UV resistant finishes/materials (ASTM D4329)
- Corrosion resistant materials (ASTM B117)



4 M A R I N E

## ANTENNA



### **AN150SR • Amplified Stereo Antenna**

- Mounts easily using adhesive foam strips
- Includes 7' cable
- Dimensions:
- 14.5"W x .875"H x .75"D

## ACCESSORIES



### **JENAUX - USB Interface and 1/8" Auxiliary Input Jack**

- USB port allows connection of an external storage device
- 1/8" AUX jack allows connection of any MP3 player or external audio device

## SPEAKERS

### **MS5006B/W • 5.25" Dual Cone Speakers**

- 30 watts max
- Available in black or white



### **MS6007W/B/S • 6.5" Coaxial Speaker**

- 60 watts max
- Available in white, black or silver





### JXHD30HPC · 3" Speakers

- 60 watts max



### MSX60B-6.5" High-Performance Coaxial Speaker

- 75 watts max
- Matte black grille



### MSX60RV · 6.5" Coaxial Speaker

- 75 watts max



### MSX65S/W-6.5" High-Performance Coaxial Speaker

- 75 watts max
- Available in white or silver



## SPEAKERS

All speakers and grilles are sold **individually** unless otherwise noted.





M A R I N E

## AMPLIFIERS



### JAHD240BT • 2-channel Bluetooth® Amplifier

- Makes standard speakers Bluetooth-capable, ready to receive and play music directly from any Bluetooth device
- 80 watts max (40 watts RMS)
- Waterproof (IPX6)
- Illuminated program button
- 4 ohm ~ 8 ohm stable
- Operating voltage: 10 - 18V
- Frequency response: 20 Hz - 20 KHz
- Epoxy potted enclosure
- Corrosion resistant finishes/materials (ASTM B117)



### POWER 760 • 760 Watt Amplifier

- Four channels
- MOSFET power supply
- Variable bass EQ (0 - 12dB @ 45Hz)
- Built-in protection circuit to safeguard against short circuits



## SUBWOOFER & ACCESSORIES



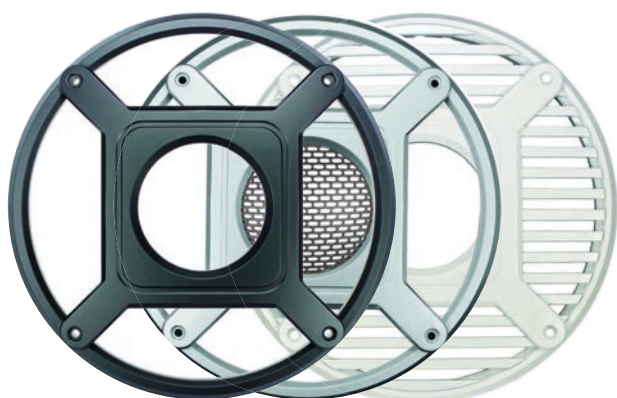
### JMP800 - 8" Amplified Subwoofer

- 200 watts max handling power
- 12VDC power system
- Built-in amplification
- Black anodized, all-aluminum enclosure
- Mate-in-lock connectors for easy installation
- Adjustable gain and crossover
- Low (line) level inputs
- Frequency: 60Hz - 200Hz
- Vertical and horizontal mounting provisions



### MSW10 - 10" Marine Subwoofer

- 500 watts max handling power
- Sealed housing design
- Designed for free air (infinite baffle) enclosures
- Nickel-plated copper terminals and insulated tinsel leads
- UV resistant finishes/materials (ASTM D4329)
- Corrosion resistant finishes/materials (ASTM B117)
- 9" mounting hole
- 4.8" mounting depth



### Compatible Grilles for MSW10 Subwoofer

**RG10SB Black Sport Grille**  
**RG10SS Silver Sport Grille**  
**RG10HW White Hybrid Grille**



9  
**polk**  
ULTRAMARINE  
CERTIFIED



Polk Ultramarine is bringing the ultimate in studio quality sound to your boat.  
Sophisticated style and high-performance audio come together in a fully matched sound system.

Embrace your  
**SophisticatedMadness™**

## STEREOS



### **PA4A - AM/FM/200 Watts/App Ready/SiriusXM-Ready™/iPod®/iPhone® Ready/Bluetooth®/USB**

- Two-piece modular design (commander and hideaway tuner/amp module)
- Waterproof commander (IPX6) and module (IPX5)
- App Ready - All primary unit functions can be controlled by any iOS or Android-based mobile device with downloaded Polk Ultramarine app
- Bluetooth streaming audio (A2DP) and controls (AVRCP)
- SiriusXM-Ready (SXV300V1M tuner and subscription required)
- Full iPod/iPhone controls and charging (via rear USB input)
- Seven-channel NOAA weatherband
- White backlit illumination
- MP3 CODEC
- ISO connector
- RBDS w/PTY search
- Low/Mid/High EQ tone controls
- USB input
- Auxiliary audio input
- Four-channel speaker output
- Six-channel line-level outputs (front/rear, RCA, 4V)
- Detachable chrome trim ring for front mounting option
- Silicone rubber protective cover
- Remote control ready (PRC100BC, PRC200BC)

Embrace your sophisticated madness with Polk Ultramarine. We believe your boat should reflect who you are: refined with a wild side. Polk Ultramarine specializes in stylish, high performance audio that takes your boat to the next level. Our feature-rich modular source units are designed to save space while maximizing functionality and our speakers deliver premium quality sound at top volume. All our products are built with waterproof, UV, and corrosion resistant materials to withstand life on the water. With Polk Ultramarine, you can keep the party going all day long.



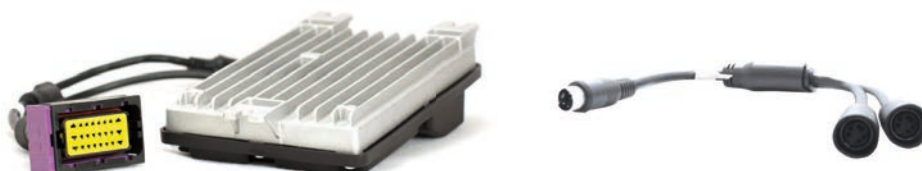
Polk Ultramarine app controls all of the primary functions of App Ready Polk stereos directly from a phone or tablet. It can be downloaded from the App Store on iTunes for Apple devices, or the Google Play Store for Android devices, and found by search "Polk Ultramarine".



#### **P1 - AM/FM/200 Watts/App Ready/SiriusXM-Ready™/iPod®/iPhone® Ready/Bluetooth®/USB**

- 4.3" color TFT display commander
- 200 watts maximum power handling (26W x 4)
- Two-piece modular design (commander and hideaway module)
- Waterproof commander (IPX6) and module (IPX5)
- App Ready - All primary unit functions can be controlled by any iOS or Android-based mobile device with downloaded Polk Ultramarine app
- Made for iPod/iPhone (via Bluetooth)
- Bluetooth streaming audio (A2DP) and controls (AVRCP)
- SiriusXM-Ready™ (requires SXV300V1M tuner and subscription)
- EQ Presets (Flat, Rock, Pop, Classical, User Settings)
- USB 2.0 Playback for MP3 and WMA audio files
- Seven-channel NOAA weatherband tuner
- Station Presets: 18 FM, 12 AM, 18 SAT
- Auxiliary line-level audio input (RCA)
- Four-channel line-level audio output (RCA, front + rear)
- Silicone rubber protective cover
- Two-wire power system with non-volatile memory
- Wired remote control capable (PRC100BC, PRC200BC)
- Low battery warning
- Conformal coated circuit boards
- Corrosion resistant materials/finishes (ASTM D1141)
- UV resistant materials/finishes (ASTM D4329)
- Dimensions:
  - 7.4" x 7.4" x 2.2" Tuner/Amp
  - 6.4" x 4.5" Commander

**Kit NMEA2000 Optional  
for Polk P1 / PA4A**



## SPEAKERS



### DB652 - 6.5" Coaxial Speaker

- Dynamic Balance technology delivers signature quality sound
- Marine certified (IP55)
- Polypropylene and UV tolerant cone with waterproof surrounds
- Includes removable sport grilles
- 92 dB sensitivity (1 watt @ 1 meter)
- 40 Hz to 22kHz frequency response
- 100W Continuous power handling
- 300W Peak power handling
- Sold as a PAIR

### UMS66W



### UMS66B



### UMS66S



### Ultra Marine 6.6" Coaxial RMS 75 - 150 Watts Speaker w/ XK Glow RGB Halo - White / Black / Smoke

- Air suspension technology to deliver 150 watts
- XK Glow LED Light Ring (Compatible with XK Glow Controller w/ App Support)
- High Temp Voice coil
- Snap On Grille Installation Option
- White Grille, Bridge, and Trim Ring

Polk Ultramarine's® sleek and powerful line of product delivers high-end features and superior sound that sets a new standard for audio entertainment.

**polk**  
ULTRAMARINE  
CERTIFIED



**polk**  
ULTRAMARINE  
CERTIFIED

## SPEAKERS

**UMS77W**



**UMS77B**



**UMS77S**



### Ultra Marine 7.7" Coaxial RMS 100 - 200 Watts Speaker w/ XK Glow RGB Halo - White / Black / Smoke

- Air suspension technology to deliver 200 watts
- XK Glow LED Light Ring (Compatible with XK Glow Controller w/ App Support)
- High Temp Voice coil
- Snap On Grille Installation Option
- White Grille, Bridge, and Trim Ring

**UMS88W**



**UMS88B**



**UMS88S**



### Ultra Marine 8.8" Coaxial RMS 125 - 250 Watts Speaker w/ XK Glow RGB Halo - White / Black / Smoke

- Air suspension technology to deliver 250 watts
- XK Glow LED Light Ring (Compatible with XK Glow Controller w/ App Support)
- High Temp Voice coil
- Snap On Grille Installation Option
- White Grille, Bridge, and Trim Ring

## SUBWOOFER

UMS108W



UMS108B



UMS108S



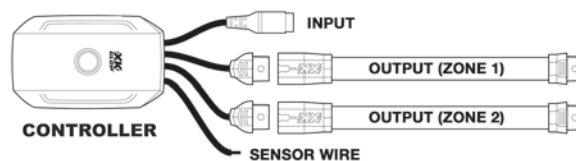
**POLK Ultra Marine 10" Subwoofer RMS 350 - 700 Watts w/ XK Glow RGB Halo - White / Black / Smoke**

- Air suspension technology to deliver 700 watts
- XKGlow LED Light Ring (Compatible with XKGlow Controller w/ App Support)
- High Temp Voice coil
- Snap On Grille Installation Option
- White Grille, Bridge, and Trim Ring

## RGB LED LIGHT CONTROLLER FOR ALL POLK UMS SPEAKERS

**XKCHROMEASA • Universal XKchrome Smartphone App Bluetooth Controller**

Take control of your lighting with the XKChrome Universal Smartphone App Bluetooth controller! Combine this controller with any 12V RGB LED XKGLOW lighting system for app control of your color changing lights using the XKChrome app.



## RGB CONTROLLER

**polk**  
ULTRAMARINE  
CERTIFIED



**polk**  
ULTRAMARINE  
CERTIFIED



#### **PA D1000.1 • Monoblock Power Amplifier**

- Dimensions: 1.81"H x 12.94"W x 6.75"D



#### **PA D4000.4 • 4 channel Power Amplifier**

- Dimensions: 1.81"H x 10.94"W x 6.75"D



#### **PA D5000.5 • 5 channel Power Amplifier**

- Dimensions: 1.81"H x 13.31"W x 6.75"D

## **AMPLIFIERS**

### **Features on all amplifiers:**

- MOSFET switching power
- Efficient Class-D bridgeable design
- Signal-to-noise ratio: 105dBA
- Distortion at rated power: <0.1%
- Filter slope: 12 dB octave
- Max sensitivity: 200 mV - 6V dB
- 12V and ground cable gauge: 4AWG
- Protection circuitry: thermal, DC offset, reverse polarity and short circuit
- Nickel-plated wire terminals and RCA connectors
- Stainless-steel hardware.



#### PRC100BC - Wired Remote Control

- Compact footprint - just 2.4" in diameter
- Waterproof (IPX6)
- White backlit illumination
- Spin-on mounting clamp
- 2"-diameter mounting hole
- Corrosion resistant materials/finishes (ASTM B117)
- UV resistant materials/finishes (ASTM D4329)

## REMOTE CONTROL



#### PRC200BC - Wired Remote Control

- Waterproof (IPX6)
- White backlit illumination
- Surface or rear flush mount
- Corrosion resistant materials/finishes (ASTM B117)
- UV resistant materials/finishes (ASTM D4329)



#### PRCEC18

- 18 ft. extension cable for Polk wired remote controls



#### PRCYC1

- "Y" cable can connect multiple Polk wired remote controls







C/ Alemanya 49 · Local nº 5 · Pol.Ind. Recinte Firal · 17600 Figueres · Girona · Spain  
Tel: + 34 972 684 189 · [info@marineaudio.eu](mailto:info@marineaudio.eu) · [www.marineaudio.eu](http://www.marineaudio.eu)